



BLC Industrial Park

**KANZA IRAQ**

**Construction Material Factory**

# Area & Location

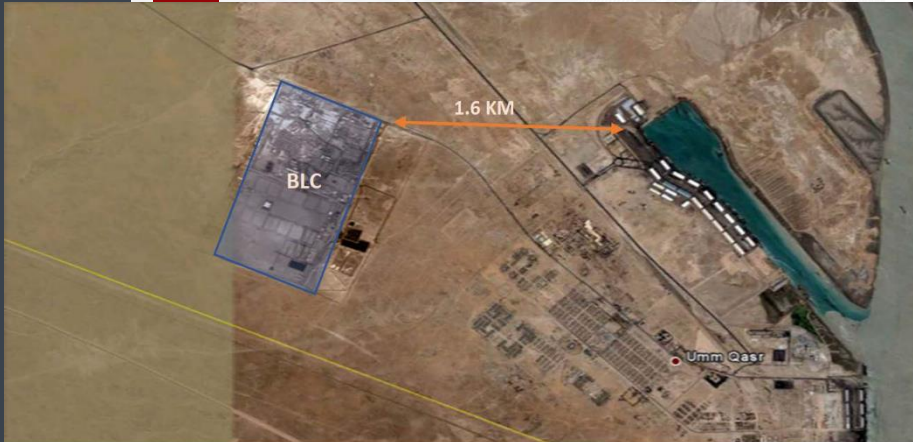
Basra Logistics City (BLC) is strategically located in the southern tip of Iraq next to the Port of Umm Qasr (Iraq's Largest Port) at a rough distance of 2-KM. On the other hand, BLC is 40 KM away from the city of Basra (Iraq's Second Largest City).

Within a radius of 150-KM, Seven of Iraq's Super Giant Oil Fields are located, which makes BLC an important logistical hub and corridor for land transportation and distribution to all over Iraq, and neighboring countries.

The total area of BLC is 3 Million M2. Within that vast area, BLC offers a wide range of services to investors, such as, Excellent Infrastructure, Roads and Parking Lots, Ready-Built Manufacturing Facilities, All Types Of Storage Facilities, Various Types of Staff Housing, Office Buildings, Banks, Medical Clinic, Security, Customs Clearance & More.



# Area & Location



BLC is an Ideal, Smart Industrial City & a Business Incubator to attract a large number of industries and investors (will campus the first Maker-Space in Iraq).

The Main Goal and Objective of BLC is to create a business efficient & friendly environment, by utilizing the Iraqi Investment Law, The Industrial Zones Law, and The Private Free Zones Law to the benefits of the wide range of investors and entrepreneurs.



## AIR



International	
Location	KM
Basra	45

## SEA



Port	
Location	KM
Um Qasr	2
Khor Azubir	11

## ROAD



Highway	
Location	KM
Um Qasr - Baghdad	0.1

## RAIL



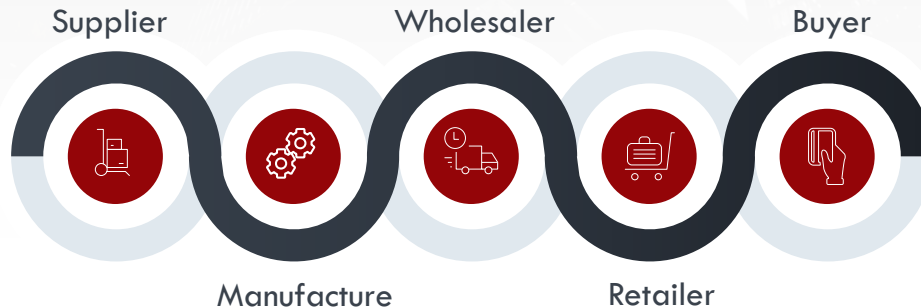
Railway	
Location	KM
Um Qasr	0.5

# Why a Smart Industrial Park ?

Location of Basra Logistics City makes it, an integral part with the Iraqi Ports in one hand, in the other hand, it's a major manufacturing & distribution hub, where costs are optimized, and success is assured.

In addition to its vast flat area, it makes it an attractive headquarters for small, medium and large industrial companies.

BLC, is an important corridor to receive and store raw materials imported through the port, manufacture and re- package, store and distribute to all over Iraq and beyond.



# Ready Facilities In BLC



# KANZA IRAQ : Manufacturing Production Lines in

#	Machine Production Line Description	Status	Product
1	PEB H-Beam & Corrugated Web H-Beam Automated Production Line (Machines : CNC Sheet Plasma Cutters + Corrugating Machine + H-Beam Welding Assembly + CNC Drilling Machine + Shot Blast Machine) – Assembly Line of 140M	In Fabrication Expected July 22	Heavy Steel Structures (Factories, Multistory Buildings)
2	LGS Cold Rolled C,U,Z Profiles Production Line (Partially – 3 Machines)	In BLC	Light and Medium Structures (Villas, Warehouses, Modular Buildings)
3	PU/PIR and Mineral Wool Continuous Sandwich Panel Production Line	In Fabrication Expected Sept 22	Insulated Walls, Roof, Cold Stores, HVAC Ducting
4	Seamless Roof Profiles, And Roof Tiles (one)	In BLC	Roofing Solution
5	Light Galvanized Steel, Corrugated Roof Profiler (One)	In BLC	Roofing Solution
6	LGS Decking Trapezoidal Profile (One)	In BLC	Flooring /Decking Solution
7	LGS Gutter Roll Forming Machines (One)	In BLC	Roof Gutter & Ridge Cap
8	Light Galvanized Steel, Cable Tray Machine, Strut Machine and Steel Slitter Machine	In BLC	Full Range of Electrical Cable Trays
9	BRC Wire Mesh & Anti Climb Fence (Two Machines)	In BLC	BRC For Construction and Fencing Solution
10	Electrostatic & Thermal Plastic Automated Coating Line	In BLC	Automated Coating Line
11	EPS Cement Sandwich Wall Machine	In BLC	Light Cement Exterior and Interior Walls System
12	PUR Lamination Production Panel (Raised Floor) (5 Small Machines)	In BLC	Flooring, False Ceiling Tiles and Decorative Wall Panels
13	Dakumar Pallets Injection Machine (Two Machines DKM 2800 and DKM650)	In BLC	PVC Pallet & Other Large PVC Products

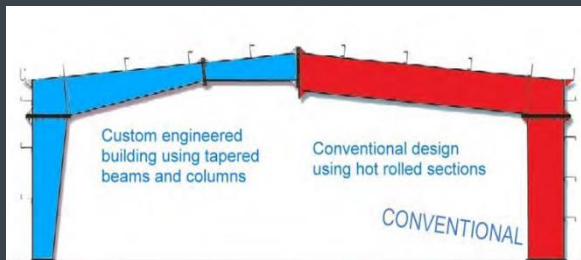


## 1<sup>st</sup> Production Line

PEB H-Beam & Corrugated Web H-Beam  
Automated Production Line.

### Products :

- Large/Heavy Structures for Warehouses
  - Large Telecom Tower
  - 10 Story Buildings



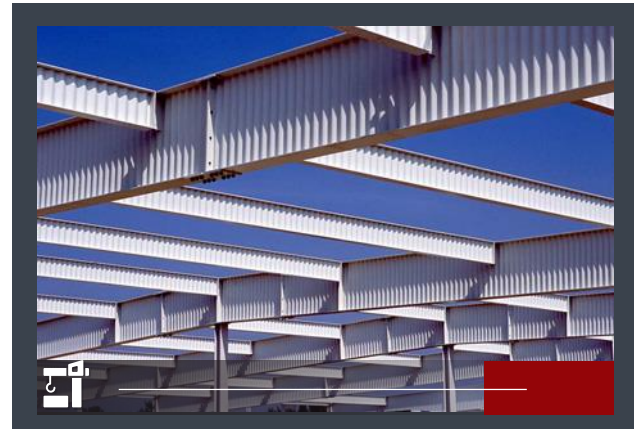
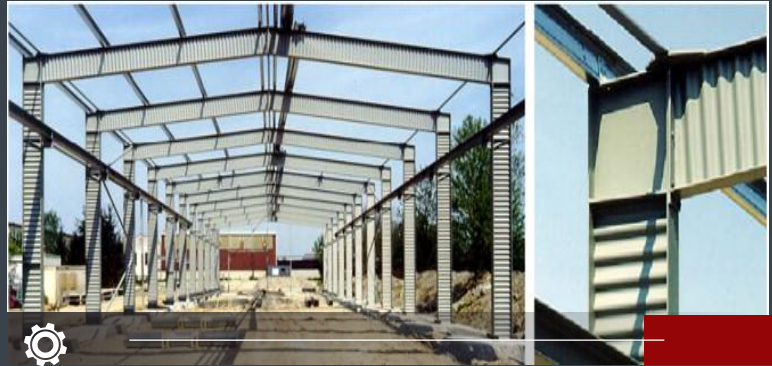


## 1<sup>st</sup> Production Line

PEB H-Beam & Corrugated Web H-Beam  
Automated Production Line.

### Products :

- Large/Heavy Structures for Warehouses
  - Large Telecom Tower
  - 10 Story Buildings

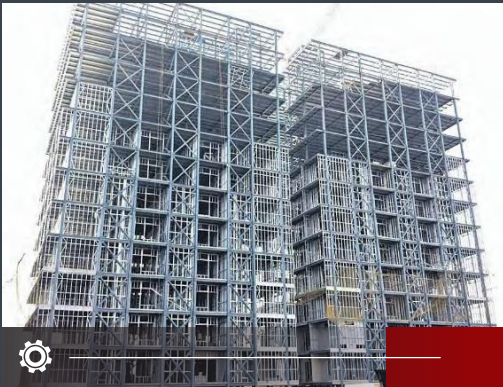


## 1<sup>st</sup> Production Line

PEB H-Beam & Corrugated Web H-Beam  
Automated Production Line.

### Products :

- Large/Heavy Structures for Warehouses
  - Large Telecom Tower
  - 10 Story Buildings

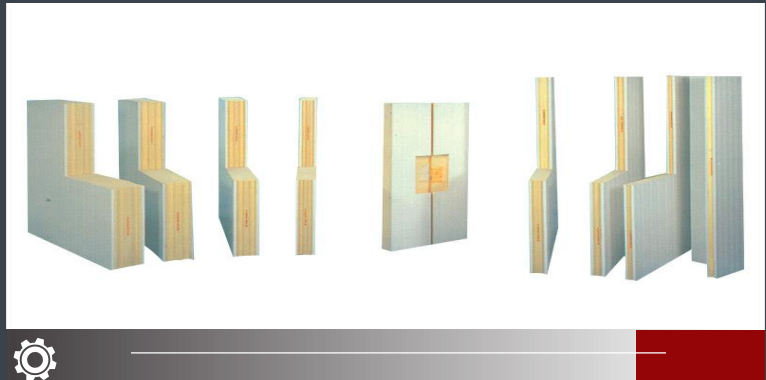


## 2<sup>nd</sup> Production Line

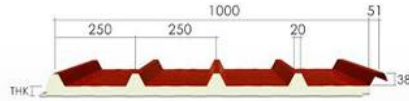
PU, PIR & Rock Wool Sandwich Panel  
Production Line.

### Products :

- Walls and Roofing (50mm – 200mm)
- PU HVAC Ducting Boards (20mm)



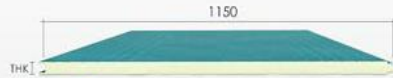
## PU Sandwich Panel



**01 Roof Panel**  
THK(mm): 30/50/75/100/150



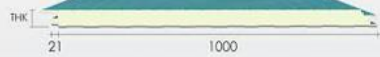
**04 Wall Panel "Fire Rated Joint"**  
THK(mm): 100/150



**02 Wall Panel "Standard Joint"**  
THK(mm): 40/50/75/100



**05 Wall Panel "Fire Rated Joint"**  
THK(mm): 175/200/250



**03 Wall Panel "Hidden Fix"**  
THK(mm): 50/75/100

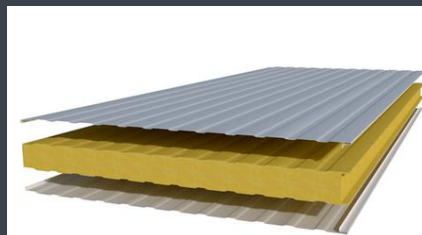


## 2<sup>nd</sup> Production Line

PU & Rock Wool Sandwich Panel  
Production Line. Cold Rooms.

## Products :

- Walls and Roofing Panels 30 – 250mm
- PU HVAC Ducting



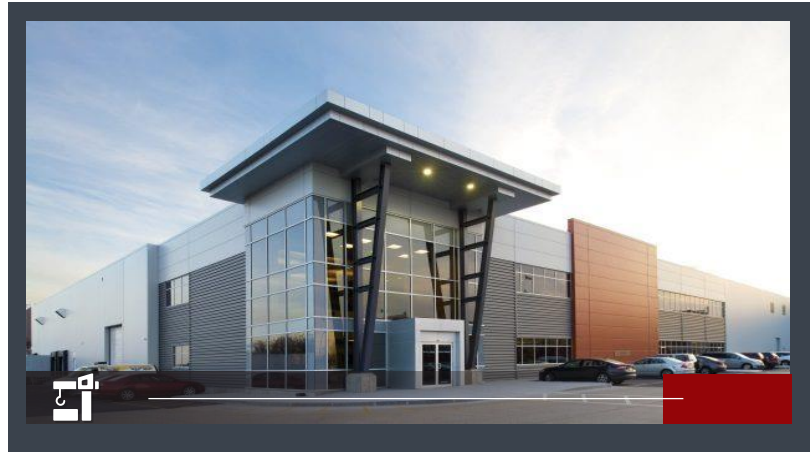


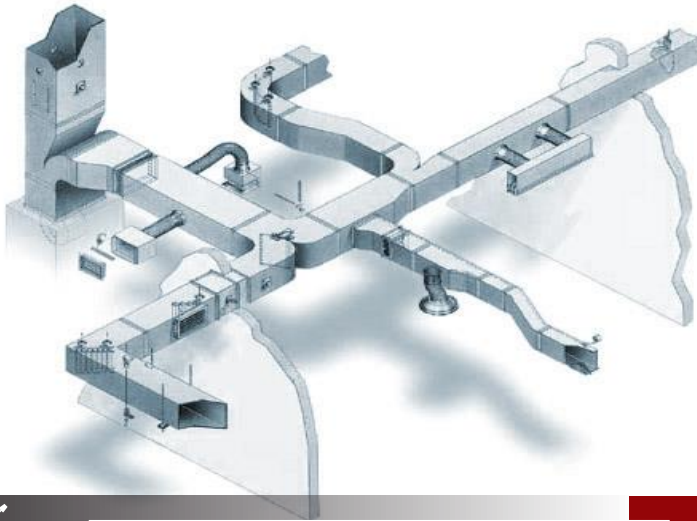
## 2<sup>nd</sup> Production Line

PU & Rock Wool Sandwich Panel  
Production Line. Cold Rooms.

### Products :

- Walls and Roofing Panels 30 – 250mm
  - PU HVAC Ducting





## 2<sup>nd</sup> Production Line

PU & Rock Wool Sandwich Panel  
Production Line. Cold Rooms.

### Products :

- Walls and Roofing Panel
- PU HVAC Ducting Boards (30mm)



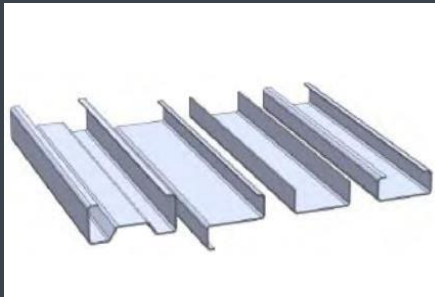
K A N Z A I R A Q

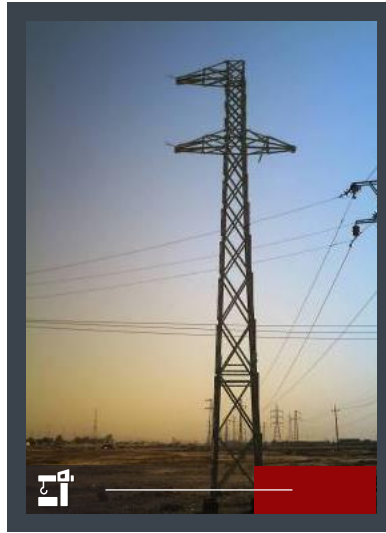
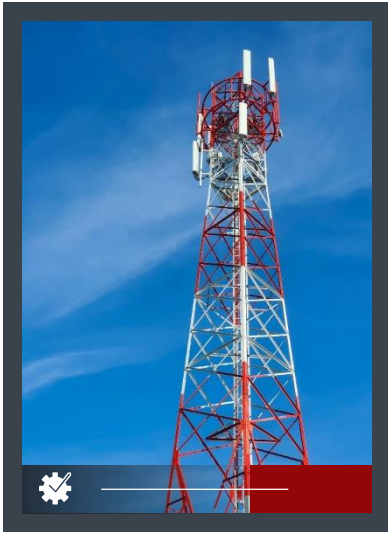
## 3<sup>rd</sup> Production Line

C, U, Z Profiles Production Line

### Products :

- Light Structures for Warehouses
- Mass Production Houses
- 5 Story Buildings & Houses
- Communication Towers
- MV Towers
- 1mm – 4mm Steel Thickness (Light & Medium Duty)





### 3<sup>rd</sup> Production Line

C, U, Z Profiles Production Line

#### Products :

- Light Structures for Warehouses
- Mass Production Houses
- 5 Story Buildings & Houses
- Communication Towers
- MV Electrical Towers
- Solar Farm Structure
- 1 mm – 4mm Steel Thickness (Light & Medium Duty)



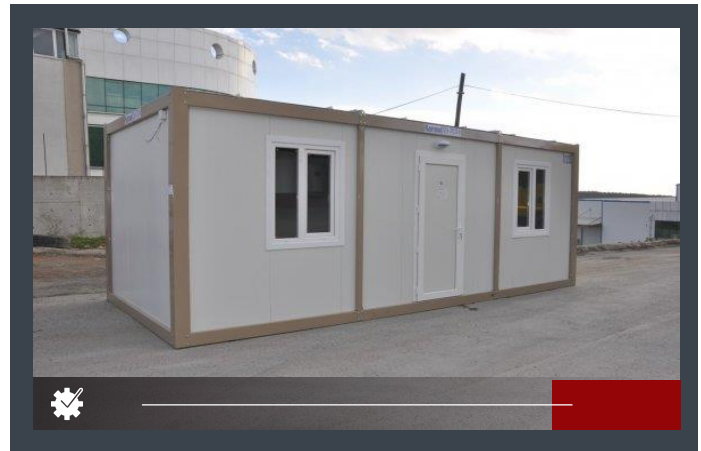
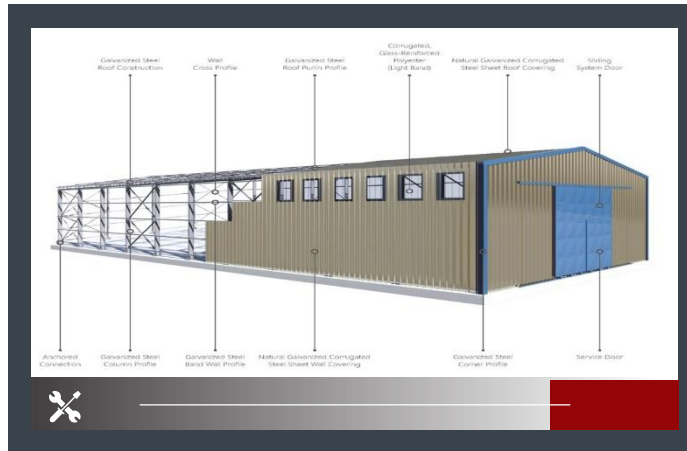


## 3<sup>rd</sup> Production Line

C, U, Z Profiles Production Line

### Products :

- Light Structures for Warehouses
- Mass Production Houses
- 5 Story Buildings & Houses
- 1mm – 4mm Steel Thickness (Light & Medium Duty)





## 4<sup>th</sup> Production Line

Seamless Roofing

### Products :

- Seamless Roof Profiles (Lockable)
  - Thickness 0.3mm – 0.8mm
  - Sheet width 305mm – 610mm



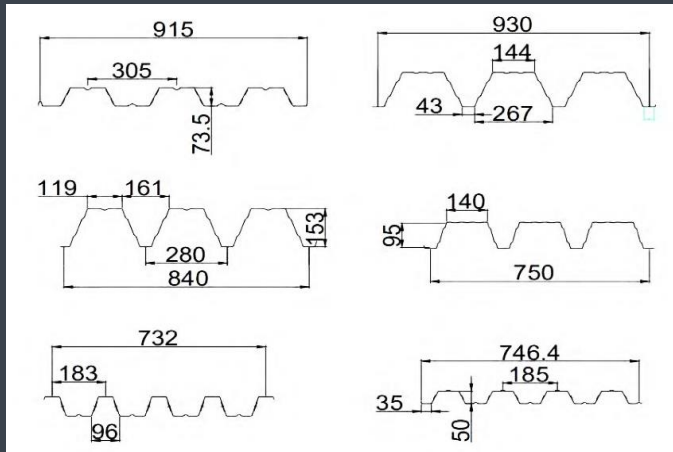
## 5<sup>th</sup> Production Line

Roof Profiler "Linbay Machines"

### Products :

- Roof Profiles (Corrugated/ Tiles)





## 6<sup>th</sup> Production Line

Roof Profiler Solution

### Products :

- LGS Decking Trapezoidal Profile (Linbay Machines)
- Thickness of Steel 0.6mm – 1.2mm
- Width of Sheet Max 930mm



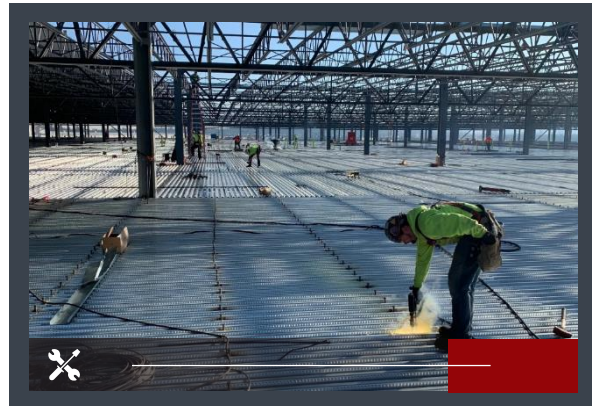
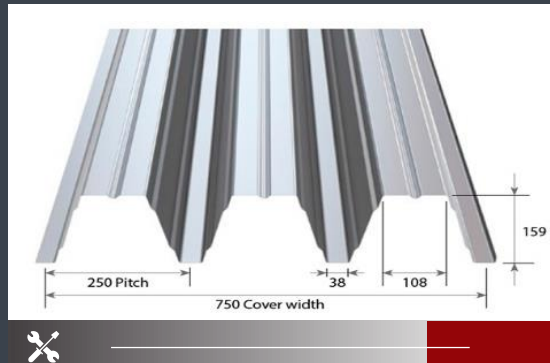


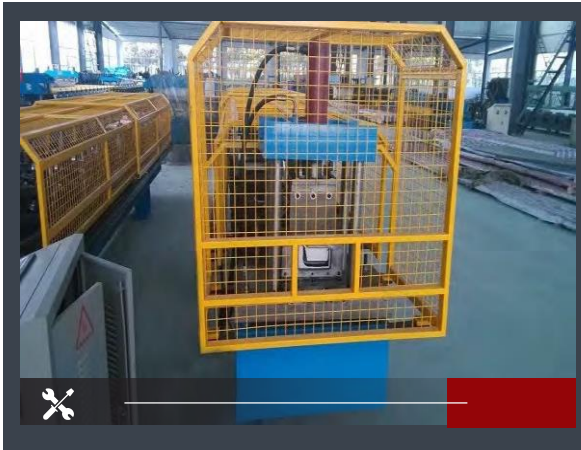
## 6<sup>th</sup> Production Line

Roof/Floor Profiler Solution

### Products :

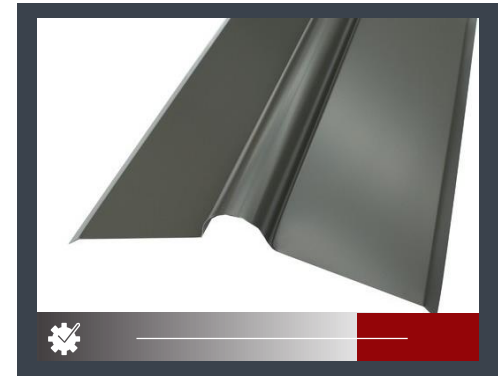
- LGS Decking Trapezoidal Profile
- Thickness of Steel 0.8mm – 1.2mm
- BRC Mesh 6mm, With Hiliti Bolts





## 7<sup>th</sup> Production Line

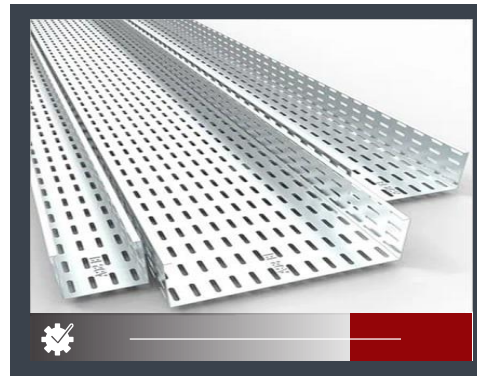
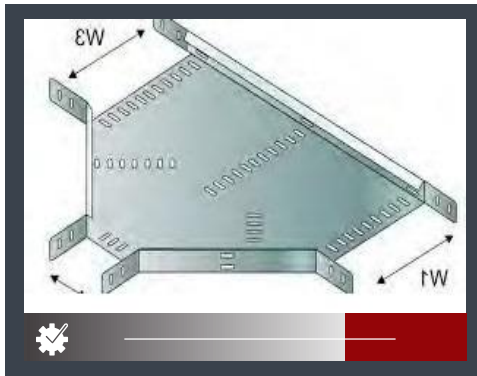
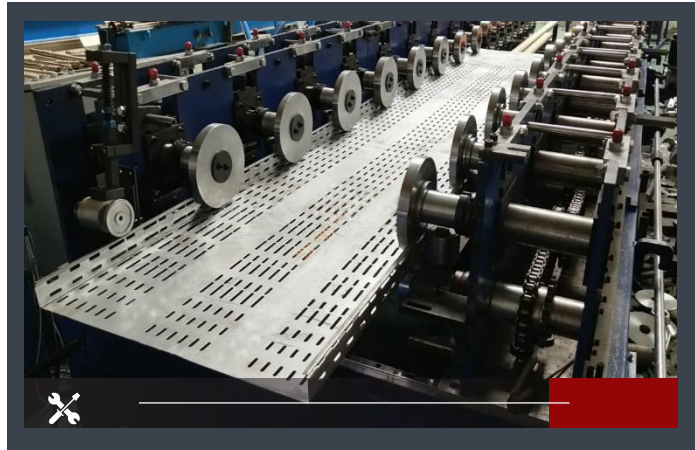
LGS Gutter Roll Forming Machine &  
Ridge Cap



## 8<sup>th</sup> Production Line

Cable Tray System

50mm – 600mm, Thickness 1 – 1.2mm

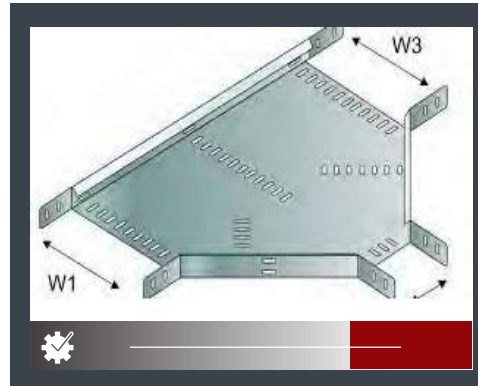




## 8<sup>th</sup> Production Line

### LGS Cable Tray Machine

50mm – 600mm, Thickness 1 – 1.2mm  
Strut 21mm – 61mm, Thickness 1.6 – 2.5mm





## 8<sup>th</sup> Production Line

### LGS Cable Tray Machine

50mm – 600mm, Thickness 1 – 1.2mm

Strut 21mm – 61mm, Thickness 1.6 – 2.5mm

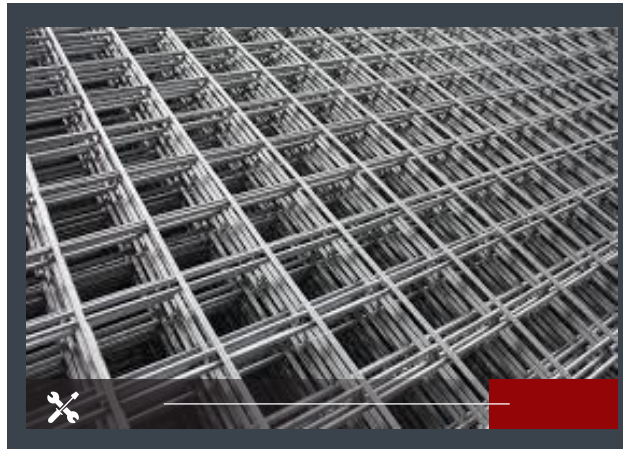




## 9<sup>th</sup> Production Line

Construction Variable BRC Mesh (4 – 8mm).

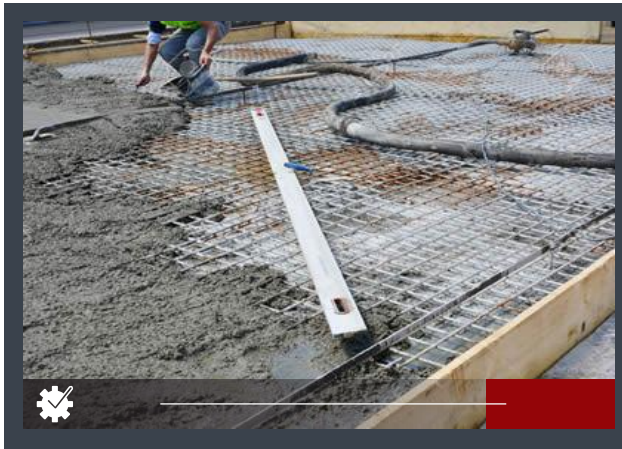
Spot Welded Anti-Climb Fencing 4 – 5mm  
(Height 3M – Width 4 – 6M)



## 9<sup>th</sup> Production Line

Construction Variable BRC Mesh (4 – 8mm)

Spot Welded Anti-Climb Fencing 4 - 5mm  
(Height 3M - Width 4-6M)





## 9<sup>th</sup> Production Line

Construction BRC (4 – 8mm)

Spot Welded Anti-Climb Fencing 4 – 5mm  
(Height 3M – Width 4 – 6M)

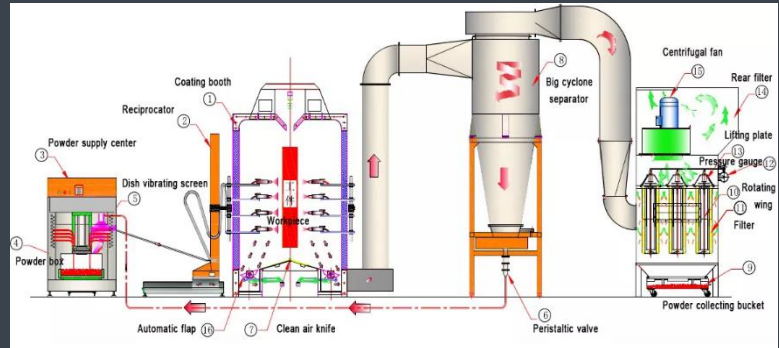




## 10<sup>th</sup> ProductionLine

### Automated Powder Coating Line

Electrostatic Coating & Thermal Plastic Coating.

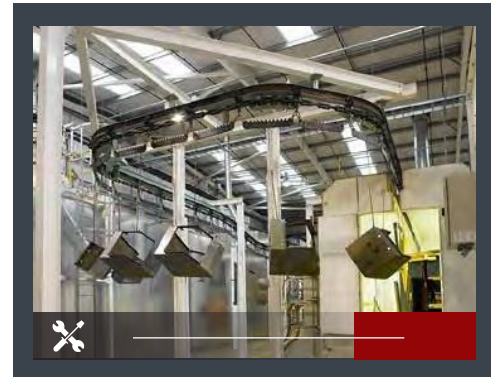
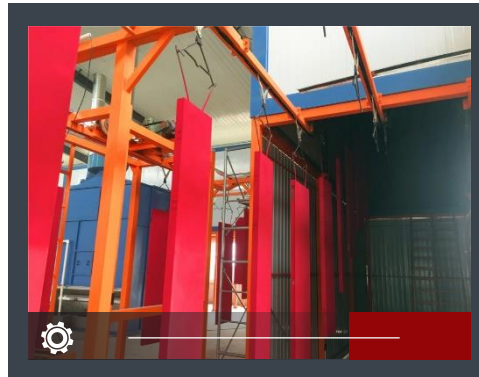




## 10<sup>th</sup> Production Line

### Automated Powder Coating Line

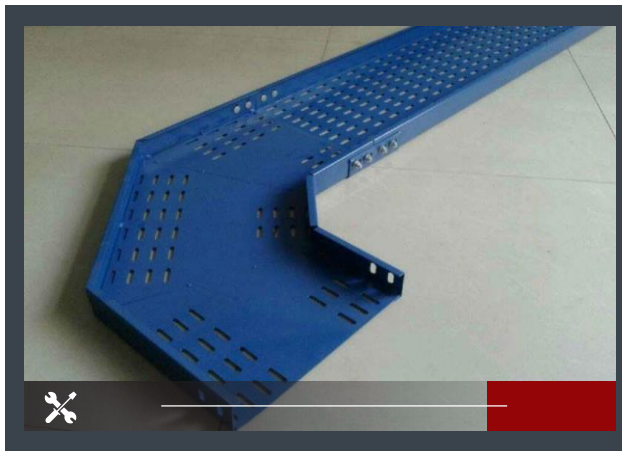
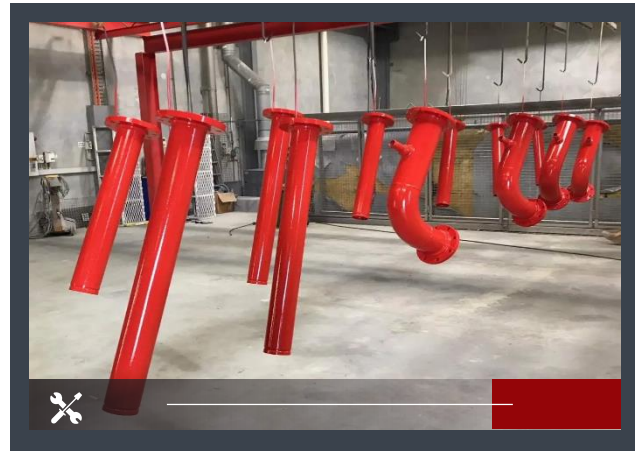
Electrostatic Coating & Thermal Plastic Coating

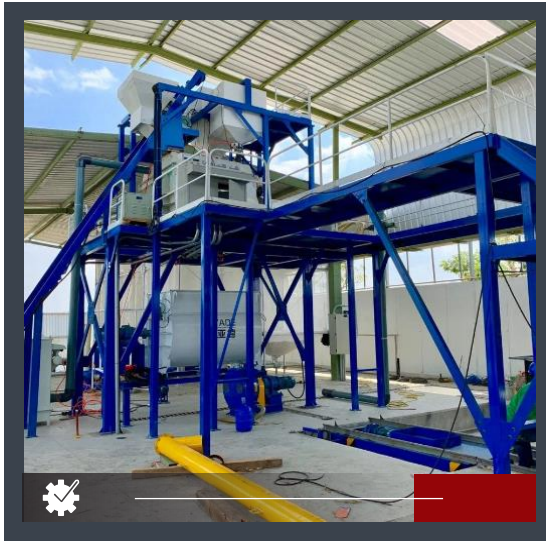


## 10<sup>th</sup> ProductionLine

### Automated Powder Coating Line

Electrostatic Coating & Thermal Plastic Coating.

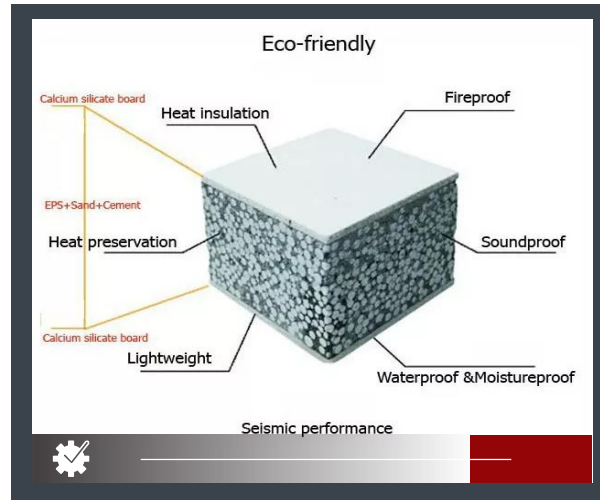
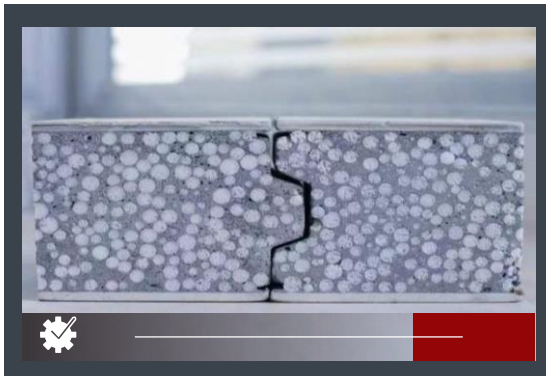




## 11<sup>th</sup> Production Line

### EPS Cement Sandwich Wall Machine

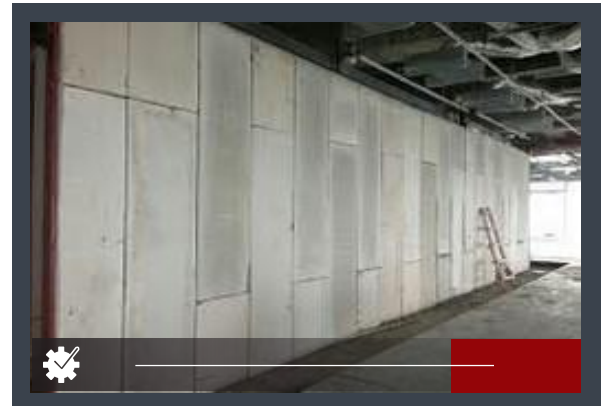
Insulated Panels of 150mm Thickness  
(Suitable For Exterior Walls) Insulated  
Panels 90mm (Suitable For Internal Walls)  
Length 3M X 0.61M





## 11<sup>th</sup> Production Line

- **EPS Cement Sandwich Wall Machine**
- Easy Wall : 3m X 0.61m
- Thickness : 90mm for internal walls Or 150mm for external walls
- Very Light
- Highly Insulated
- Fire Resistant
- Quick Installation and Erection

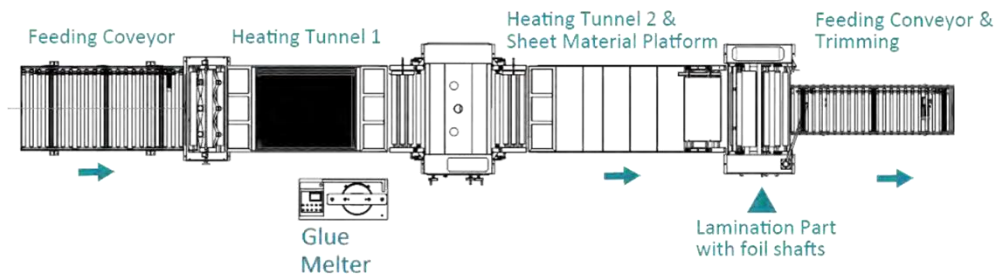
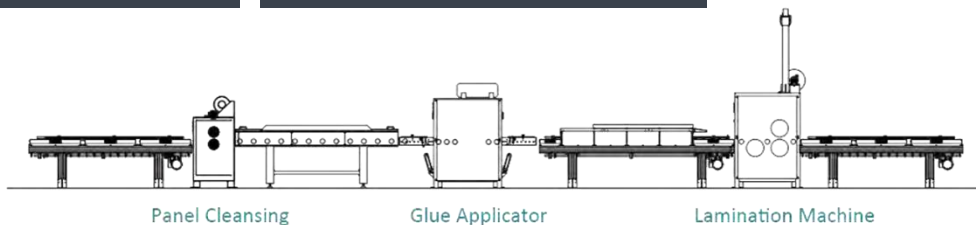




6<sup>th</sup> Production Line

**Raised Floor Tiles**

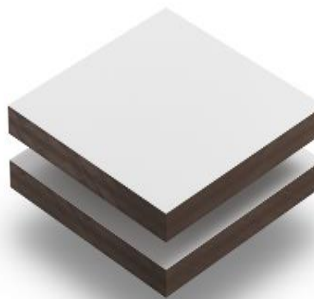
600X600mm Thickness 30-35mm



## 12<sup>th</sup> Production Line

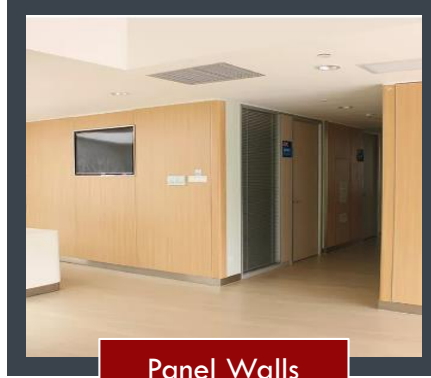
### Raised Floor Tiles

600X600mm Thickness 30-35mm





False Ceiling Tiles

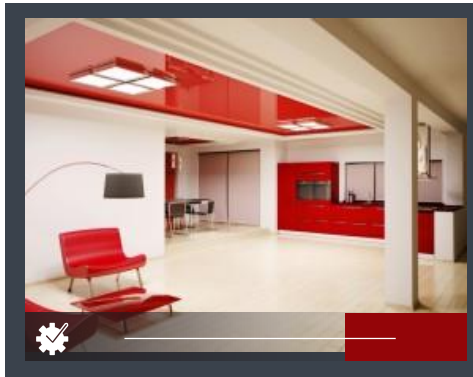
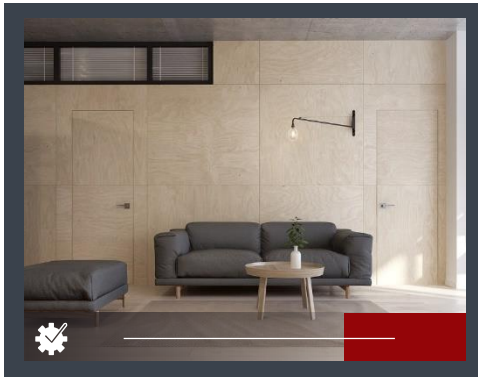


Panel Walls

## 12<sup>th</sup> Production Line

### False Ceiling and Wall Panels

600X600mm Thickness 30-35mm

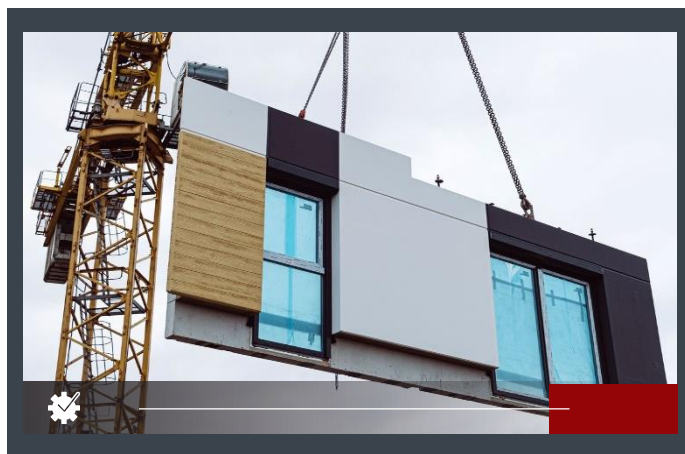




## 13<sup>th</sup> Production Line

### Prefabricated Modular Units

Housing, Schools, Shelters ..etc



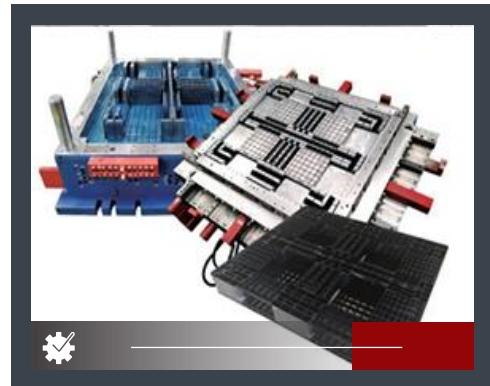


## 14<sup>th</sup> Production Line

### DKM 2800 Mould Injection Machine

Pallet Mould : 1.2m X 1m X 0.14m

Capacity : 1.1 Ton



## 13<sup>th</sup> Production Line

### DKM 2800 Mould Injection Machine

Pallet Mould : 1.2m X 1m X 0.14m

Capacity : 1.1 Ton





 [www.kanza-iq.com](http://www.kanza-iq.com)



009647800777000 - 001 832 800 8683



HQ Baghdad Office, Al-Mansour Area  
Basra main Office, Juninah Area.

Basra Logistics City, Um Qasr, Basra USA  
office, Houston, TX 77024.